

The Print Line

The Newsletter of Levi, Ray & Shoup, Inc.

Winter 2002

Secured Output Distribution Over Shared TCP/IP Networks

Many organizations have begun to use the Internet and other shared TCP/IP networks for host connectivity and output distribution. These organizations benefit from the global reach these networks offer without investing in new network infrastructure. But they must also deal with the open nature of these networks, which exposes any data transmitted over them.

Before they distribute proprietary or confidential output to printers over shared networks, organizations need a dependable method for encrypting the output. They need the Secured Output Distribution products from LRS—VPS/Secure, AnyQueue/Secure, and DRS/Secure.

VPS/Secure retrieves output from the JES spool, encrypts it using the Rijndael algorithm, and routes it via TCP/IP to a printer equipped with the necessary decryption hardware, AnyQueue/Secure, or DRS/Secure. VPS/Secure enables the user to specify the decryption key and key length.

AnyQueue/Secure decrypts output received from VPS/Secure via TCP/IP before routing that output to the appropriate LAN destination. The combination of VPS/Secure and AnyQueue/Secure maintains host-to-LAN security without installing decryption hardware on every network printer. AnyQueue/Secure can also encrypt print jobs before routing them to DRS/Secure or a printer equipped with decryption hardware.

DRS/Secure receives and decrypts output sent via TCP/IP from VPS/Secure and AnyQueue/Secure and writes the output to the JES spool.

The initial release of the Secured Output Distribution products make use of the Rijndael encryption algorithm, selected by the National Institute of Science and Technology as the Advanced Encryption Standard. Future versions of the Secured Output Distribution products will support additional encryption algorithms.

For secure printing, output encrypted by the initial release of VPS/Secure or AnyQueue/Secure must be routed to an HP LaserJet equipped with SecureDIMM or SecureDIMM II decryption products from Capella Technologies. Encrypted output routed to a printer that does not have the Capella decryption products will result in meaningless hard copy.

LRS is working with additional manufacturers of decryption hardware so that future versions of Secured Output Distribution products will be compatible with a variety of output devices.

For more information on VPS/Secure, AnyQueue/Secure, or DRS/Secure, contact your LRS marketing representative. You can obtain additional information on SecureDIMM products by calling Capella Technologies at 888-232-4200 or visiting their web site, www.capellatech.com.

In This Issue

- ◆ AFP to PDF Conversion Utility in Beta Test
- ◆ Enhanced VMCF V1 R8.1 Now Generally Available
- ◆ Host Products Will Ship On 3490 Tape Cartridges
- ◆ When should VPS® users upgrade to V1 R8.0? Now!
- ◆ Breaking Previous Limitations, New PageCenter Web Access Is GA
- ◆ LRS Teams With Sector, Inc.
- ◆ EOM Products Updated for z/OS 1.2 Changes
- ◆ AnyQueue for HP-UX and Sun Solaris in Development
- ◆ New VPS/PCL Features Ready for Beta Testing
- ◆ Broadlawns Medical Center Reduces Swollen Printing Costs with LAN-based LRS Software
- ◆ First User Conference Successful; More Planned for Spring 2002



AFP to PDF Conversion Utility in Beta Test

VPS/Email users have the capability to convert line-mode reports to Adobe's Portable Document Format (PDF) and send the resulting file as an email attachment to one or multiple email addresses. A new VPS® extension product, VPS/AFP to PDF, currently in beta test, enables users of VPS/Email and other products to convert AFP documents to PDF files.

PDF files are viewable on multiple computer platforms using Adobe's free Acrobat Reader.

The VPS/AFP to PDF conversion will be compatible with AnyQueue™ for delivery to multiple LAN destinations and VPS/CDI for routing to CONNECT:Direct for OS/390 from Sterling Commerce, Inc., which enables high-speed file transfers to such remote systems as VSE, UNIX, AS/400, and Microsoft Windows NT.

The product will also be compatible with VPS/Email, which enables you to route output directly from the JES spool to an email address or multiple addresses. Reports can be sent as attachments in Rich Text Format (RTF), HyperText Markup Language (HTML), ASCII text, and PDF. Now AFP documents can also be sent as email attachments in PDF.

AFP, the abbreviation for Advanced Function Presentation, is the IBM

architecture for enabling mainframe computers to combine variable data produced by application software with static graphic elements to create a complete printable form. Mainframes store libraries of resources, such as form overlays, graphic images, and fonts, which AFP uses to construct a form.

To enable the AFP-PDF conversion, users must include a "pdf" parameter in the appropriate printer definition. When VPS encounters "pdf" as a conversion type in the printer definition, it will stage the dataset and activate VPS/AFP to PDF. This extension checks the data stream for the presence of AFP data, such as FORMDEF, PAGEDDEF, or any AFPDS records. When AFP data is detected, VPS/AFP to PDF converts the dataset to PDF and compresses the result by a user-definable amount.

The first release of VPS/AFP to PDF will support AFP to PDF font and codepage mapping. The initial release will also support most Object Content Architectures (OCAs) as well as all resource types, except for OBJECT CONTAINERS.

To learn more about beta testing VPS/AFP to PDF, contact your marketing representative at (217) 793-3800 or send an email to askLRS@LRS.com.

Enhanced VMCF V1 R8.1 Now Generally Available

The latest version of the VPS Monitor and Control Facility (VMCF), V1 R8.1, now generally available, offers enhanced screens and performance along with support for Double Byte Character Sets (DBCS).

VMCF screens which display VPS printer summary information now include PJL and PDF parameter information. For a specific printer, VMCF indicates whether VPS will send PJL commands and which types of commands VPS will send. VMCF also indicates whether a printer supporting PJL was online during the last status update; whether the current job is active, inactive, or canceled; job name; and last reported message displayed on the printer.

PDF conversion parameters are also displayed on VPS printer summary screens. The information includes the VPS PDF conversion parameters in use; special options used for VPS PDF conversion; page size to be used in the PDF conversion; and the font name and size for VPS to use when converting a print file to PDF format.

Customers utilizing DBCS support can configure VMCF to display screens in Japanese.

VMCF screens which display error or abend information provide enhanced capabilities for error handling and recovery. VMCF V1 R8.1 supports cell pool usage for module storage areas.

VMCF V1 R8.1 requires VPS V1 R8.0.

For more information about VMCF V1 R8.1, including information about obtaining the upgrade, contact your marketing representative at (217) 793-3800.

Host Products Will Ship On 3490 Tape Cartridges

Effective February 1, 2002, LRS will begin shipping all OS/390 host products on enhanced capacity 3490 tape cartridges.

If your system is unable to read 3490 cartridges, please contact your marketing representative at (217) 793-3800. We can continue shipping products on 3480 cartridges for a limited time, but we plan to phase out the use of 3480 tape cartridges completely.

When Should VPS® Users Upgrade to V1 R8.0? Now!

When LRS announced the general availability of VPS® V1 R8.0 in May 2000, we also announced that we would drop support for VPS V1 R6.2 as of December 31, 2000. LRS traditionally supports a maximum of two releases for any Enterprise Output Management product.

We currently support VPS V1 R8.0 and VPS V1 R7.0. As part of the VPS V1 R8.0 GA announcement, LRS urged customers who are using V1 R6.2 and V1 R7.0 to upgrade to the current version. Steve Mortimer, Manager of Product Support noted that some customers are still reluctant to upgrade.

"We understand the attitude of some customers who say they don't want to fix anything that isn't broken," Mortimer said. "We're proud that VPS has always been such a stable, dependable product. However, these customers are cheating themselves of many major enhancements that have been added into the new release. And true to tradition, VPS V1 R8.0 is proving to be even more reliable!"

One key feature is support for IBM's SYSOUT Application Program Interface (SAPI), which provides VPS V1 R8.0 users with improved performance and usability. Utilizing SAPI allows VPS to retrieve output from JES in a fraction of the time and overhead needed with PSO. And SAPI eliminates the need for VPS to stage print files during processing in most situations. In addition, some VPS user exits are no longer needed.

Key features of VPS V1 R8.0 also include:

- Extended AFP Printer Support, including support for bar code objects as defined in the MODCA architecture and additional flexibility in the AFP resource table.
- Reduced storage used below the 16M line.
- New and enhanced VPS printer keywords, including a complete set of printer command keywords which can replace or simplify VPS user exit 14.
- VPS/Email, an extension product that requires VPS V1 R8.0
- VPS/LCDS, another extension product that requires VPS V1 R8.0

Upgrading to VPS V1 R8.0 also enables customers to upgrade to PageCenter® V1 R1.1, which offers improved import and vaulting performance and other enhancements, including:

- Print bundling, a feature that accumulates defined reports and automatically prints them on a predefined schedule and enables you to manually print them at any time.
- Duplex vault functionality, a feature that allows you to define, create and control multiple copies of vault datasets.
- Usage statistics
- Ability to view archived reports during backup to minimize down time for end users.

In the coming months, LRS will release enhancements to numerous VPS extension products, and those enhancements will require VPS V1 R8.0. Those extension products include:

- VMCF
- VPS/PCL
- PageCenter Web Access
- VPS/AFP to PDF
- VPS/Secure

For assistance with upgrading to VPS V1 R8.0, call Product Support or your marketing representative at 217-793-3800.

VPS V1 R8.1

LRS is currently at work developing VPS V1 R8.1, which is scheduled for release by the end of 2002. Once VPS V1 R8.1 is generally available, we will discontinue support for VPS V1 R7.0.

VPS V1 R8.1 will offer the following features:

- Support for OS/390 subspaces, data spaces, and cell pools
- Ability to select datasets by 8 character form name
- Error detection for compression and encryption
- Dynamic loading of user exits and separators
- Higher maximum number of user exits
- Elimination of JES-dependent exits

Current Version/Release Levels

Product	Version/Release	Fix Level
VPS®	V1 R7.0	303
	V1 R8.0	237
DRS	V1 R3.2	135
	V1 R3.3	075
VMCF	V1 R7.0	122
	V1 R8.0	054
VMCF Client for Win.	V1.1	008
	V1.2	003
PageCenter®	V1 R1.0	018
	V1 R1.1	080
Web Access	V1.1	008
Client for Windows	V1.1	005
PageCenter Plus®	V1 R1.1	001
VPSPrint	V1 R6.1	023
VPS/Report Browse	V1 R2.1	005
	V1 R2.2	000
VPS/PC for NT	V1.0	016
VPS/PC for OS/2	V1.0	019
VPS/PC for NLM	V1.3	025
VPS/PC for Win.	V1.1	009
VPS/PC for DOS	V1.3	019
DRS/PC for NLM	V1.3	022
DRS/PC for DOS	V1.3	019
AnyQueue/PageSorter™	V1.0	011
AnyQueue™	V1.1	010
AnyQueue/WebTRAC™	V1.1	010
LRS OS/API	V1R1.0	025
	V1R1.1	003
LRS MVS Server	V1R7.0	078
	V1R8.0	081
LRS/LAN Server	V1R1.0	008
LRS/Web Connect	V1R1.1	002
LRS/Net.	V1R1.0	004

NOTE: "VPS" includes base VPS and all VPS extension products (VPS/PCL, VPS/IPDS, VPS/TCPIP, VPS/Email, and VPS/CDI).

"VMCF" includes VMCF/TSO, VMCF/CICS, and VMCF/VTAM.

"DRS" includes DRS/API, DRS/NPI, DRS/STI, and DRS/SAPR2.

If you are running at an old fix level and wish to receive updated distribution materials, contact your marketing representative.

Please remember that we cannot ship materials to a site where maintenance has lapsed.

Product Support Via Email

Whenever you have a technical question about Enterprise Output Management products from LRS, you can get the answer via email. Simply send your question to EOMSupport@LRS.com.

Breaking Previous Limitations, New PageCenter Web Access Is GA

PageCenter Web Access provides customers with the capability to view mainframe-based line-mode reports and AFP documents securely over the Web. End users can view reports online using a standard Web browser instead of a proprietary viewer.

The architecture of the initial version of PageCenter Web Access imposed certain limitations, however. Because most of its processing was performed inside Microsoft's Internet Information Server (IIS), PageCenter Web Access could run only on the Windows platform. Maintaining compatibility with different versions of available Web browsers was difficult, and customizing the appearance of PageCenter Web Access was impossible.

The newest version of PageCenter Web Access, V1 R2.0, which became generally available in December, breaks through all those limitations. We redesigned PageCenter Web Access and completely rewrote the product based on a new architecture which allows customers to choose the web server software and platform that fits their computing environment.

PageCenter Web Access provides a Web browser-based interface to the PageCenter® report archiving system. Running in the LRS/MVS Server address space on the OS/390 host, PageCenter maintains an archive of reports and administers report security.

The new architecture of PageCenter Web Access incorporates a pair of infrastructure utilities, LRS/Net and LRS/Web Connect, which are shipped with PageCenter Web Access.

LRS/Net

LRS/Net provides the environment for LRS Web-enabled products currently in development. PageCenter Web Access V1 R2.0 is the first product to take advantage of LRS/Net's capabilities.

Running in its own address space on the OS/390 host, LRS/Net separates PageCenter Web Access processing from the Web server environment. This reduces the load on the Web server, eliminates platform-specific restrictions from PageCenter Web Access,

and enables customers to use PageCenter Web Access with the web server software and platform that meets their needs.

The LRS/Net architecture utilizes the Web servers to manage the communication with the client Web browser and relays incoming requests to the LRS/Net application server for processing. PageCenter Web Access processes the incoming request, builds an HTML response, and returns the HTML to the Web server for transmission to the requesting browser.

LRS/Net maintains a standard execution environment for all LRS Web-enabled applications, providing consistent management, diagnostic facilities and operation. LRS/Net offers a standard set of services for common tasks including messages, logging, character translation, storage management and a complete range of diagnostic

2002 Trade Show Schedule

SHARE Technology Exchange
March 4-6
Nashville, TN

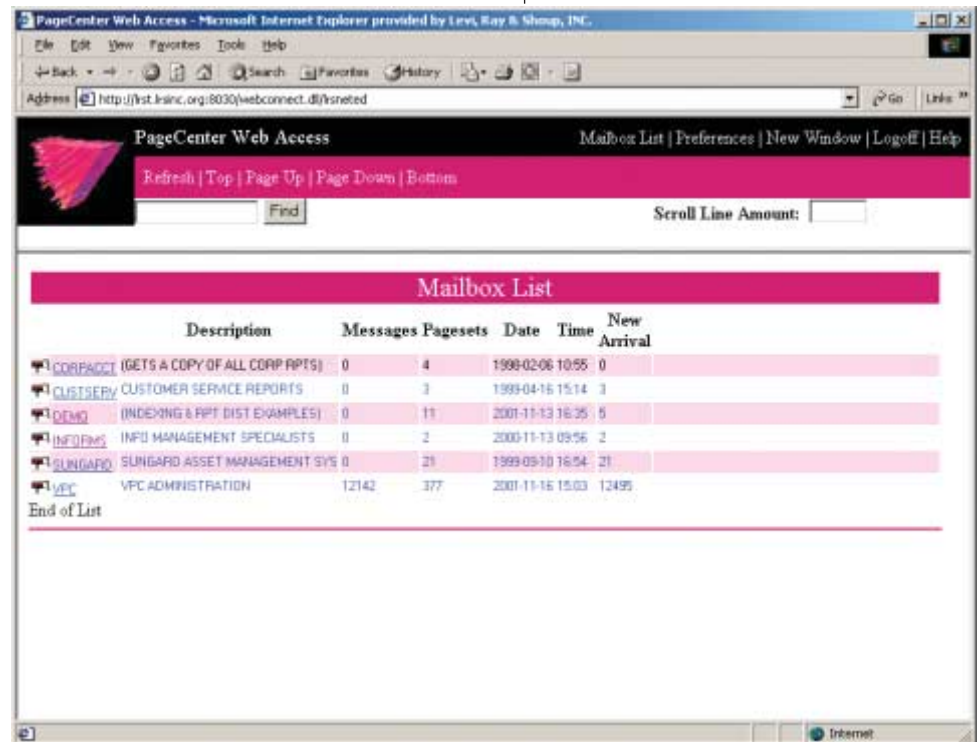
IS Expo Spring 2002
April 16-17
Las Vegas, NV

SHARE Technology Exchange
August 18-23
San Francisco, CA

Networking Solutions Technical Conference
September 23-25
Orlando, FL

OS/390 Expo and Performance
October 7-9
Miami, FL

Xplor 2002
October 27-30
Anaheim, CA



facilities. The LRS/Net environment manages all communication between Web clients and LRS Web applications—including PageCenter Web Access—and also manages connections to all defined LRS/MVS servers.

continued on page 5

Customers implementing PageCenter Web Access V1 R2.0 will have the ability to tailor its appearance using HTML templates.

PageCenter Web Access

continued from page 4

LRS/Web Connect

Because LRS/Net maintains so much functionality on the OS/390 host, LRS/Web Connect is the only LRS software needed on the Web server. LRS/Web Connect is a single executable that is used to communicate incoming client requests to the LRS/Net application server and return the HTML response. Originally released in June 2001, LRS/Web Connect also handles web requests and responses for AnyQueue/WebTRAC™.

LRS/Web Connect runs inside web servers on all major platforms, including OS/390, Windows, and UNIX.

Customizable Appearance

With the flexibility provided by LRS/Net, PageCenter Web Access V1 R2.0 enables customers to customize the look of their implementation using HTML templates. These HTML templates will provide the source for each of our web pages and can

be customized to meet the different requirements that our customers have in their environments.

By altering the templates, customers can display different company logos and colors, different help information and even different languages. The architecture allows an organization to use multiple groups of templates at the same time to meet the individual needs of different users.

Requirements

PageCenter Web Access V1 R2.0 requires:

- LRS/Net V1 R1.0
- LRS/Web Connect V1.0
- VPS V1 R8.0
- PageCenter V1 R1.1

To obtain PageCenter Web Access V1 R2.0 or get more information, contact your marketing representative at (217) 793-3800.

LRS Teams With Sector, Inc.

Levi, Ray & Shoup, Inc., has teamed with Sector, Inc., to provide enhanced LAN-based management of mainframe-generated output for organizations in the securities and financial services industries.

Sector is a wholly-owned subsidiary of the Securities Industry Automation Corporation (SIAC), which is a joint subsidiary of the New York Stock Exchange and the American Stock Exchange.

SIAC runs the computer systems and communications networks that power the two stock exchanges and disseminate U.S. market data worldwide.

Through Sector, clients leverage this unique expertise to benefit their business. The Managed Services division provides highly reliable and cost-effective solutions for network and systems management, e-commerce and more. Sector also offers a full suite of communications services. As a central industry hub, Sector provides automated transmission of fixed income and equities data through Sector's Data Distribution business unit.

The LRS-Sector alliance enables Sector clients to implement LRS LAN-based output management products—AnyQueue™, AnyQueue/PageSorter™, AnyQueue/WebTRAC™, and PageCenter Plus®.

Because VPS® and VPS/TCPIP are running on the SIAC mainframe, Sector clients can install VPS/AnyQueue on their networks to receive output via TCP/IP or SNA connections. Using AnyQueue/WebTRAC, Sector clients can store the reports short-term and route them to the appropriate network destination when needed.

Sector clients can also use AnyQueue/PageSorter to decollate reports before routing them to a destination. PageCenter Plus provides a long-term LAN archive of reports along with tools for data analysis and extraction to other PC-based applications.

For more information on the benefits offered by LRS® LAN output management products and the LRS-Sector alliance, contact your LRS or Sector marketing representative.

EOM Products Updated for z/OS 1.2 Changes

LRS has applied updates to Enterprise Output Management products for operating system levels up through and including z/OS 1.2. The fix levels at which those updates were applied are:

For V1R7.0:

VPS V1R7.0.282
VMCF V1R7.0.118
LRS/MVS Server (VSV) V1R7.0.073
Report Browse 2.1.004

For V1R8.0:

VPS V1R8.0.200
VMCF V1R8.0.045
LRS/MVS Server (VSV) V1R8.0.066

The major change that you will see is the format of the job ID field. Previously, the 8-character job ID consisted of three alpha characters (JOB, STC, or TSU), followed by the 5-digit job number. Because z/OS 1.2 increases the highest possible job number from 65,534 to 999,999, the 8-character job ID will now consist of one alpha character (J, S, or T), followed by the 7-digit job number. This change will take effect when you upgrade to the listed fix level or higher, **even if you are not running z/OS 1.2.**

These fixes are not available as zaps, because they include source code changes to many modules and macros.

When you upgrade any one of the products to the listed fix level or higher, you **MUST** upgrade any of the other products that you use, even if you do not use z/OS 1.2. You will also need to re-assemble and link any JES-dependent VPS, VMCF, LRS Server (VSV) and Report Browse modules that are implemented at your site, using the **updated** source (ASM) and macro (MACLIB) libraries. This includes JES-dependent user exits and module VR21GTJ2 (for Report Browse R2.1) or VR22GTJ2 (for Report Browse V1 R2.2).

If you have any questions regarding the appropriate fix levels of EOM products for use with MVS, OS/390, or z/OS operating system levels, check the table on our web site at <http://www.LRS.com/eom/OS390.htm>, call Product Support at (217) 793-3800, or send an email to EOMSupport@LRS.com.

AnyQueue for HP-UX and Sun Solaris in Development

Capable of receiving output from multiple hosts concurrently and routing the output to multiple destinations, AnyQueue for HP-UX and AnyQueue for SUN will soon enter beta test. Future versions of AnyQueue for UNIX are planned for use under IBM AIX and possibly Linux.

AnyQueue for HP-UX requires a UNIX host running HP-UX 11.00 or later, a CD-ROM drive, and TCP/IP software.

AnyQueue for SUN requires a UNIX host running Sun Solaris 2.7 or later. If the software will connect with VPS on the OS/390 host, VPS must be V1 R8.0 or V1 R7.0 fix level 111 or later, and VPS/TCPIP must be installed. All connections to AnyQueue for UNIX must be TCP/IP.

When AnyQueue for HP-UX or AnyQueue for SUN receives output, it reads attributes in the form of JES SYSOUT attributes or an LPR/LPD control file. Based on those attributes, the software can route the output to any of the following network destinations:

- Printers
- UNIX files
- LPDs
- UNIX print queues
- Email

UNIX versions of AnyQueue products include all the AnyQueue/WebTRAC features currently available in AnyQueue for

Windows. WebTRAC enables AnyQueue to temporarily retain output before delivering it to network destinations. Administrators and end users with appropriate security can access and manage retained output using a standard web browser.

AnyQueue/WebTRAC enables end users to print reports when and where they need them, no matter when the reports were processed and delivered to AnyQueue.

Confidential reports can be stored by AnyQueue/WebTRAC until the end user who needs them logs in and routes the reports to a network printer.

AnyQueue/WebTRAC's error recovery function enables jobs in error status to be automatically retried based on a user-specified interval, rerouted to another destination, or simply retained and managed manually.

Customers who implement both AnyQueue for UNIX and AnyQueue for Windows will find the configuration files are portable from one platform to the other.

If you are interested in beta testing AnyQueue for HP-UX or AnyQueue for SUN, or if you would like to receive additional information about the product, contact your marketing representative at (217) 793-3800 or send an email to askLRS@LRS.com.

New VPS/PCL Features Ready for Beta Testing

Conversion of AFP outline fonts to PCL bitmap fonts is the newest enhancement to VPS/PCL; this enhancement is available for beta testing as of April 1, 2002. If you are interested in testing the AFP font conversion enhancement, contact your marketing representative at (217) 793-3800 or send an email to askLRS@LRS.com.

The font conversion procedure enables users to scale fonts from 240 dots per inch (dpi) to 300 dpi. Font scaling helps prevent conversion failure, and users may also pre-scale fonts.

This latest enhancement to VPS/PCL follows features that were added to VPS/PCL and VPS/IPDS last fall.

Features added to **VPS/PCL**:

- Support for FORMDEF finishing options such as stapling
- Support for FORMDEF 'CUTSHEET' option to allow specifying the orientation of the medium presentation space on the physical medium.
- Support for FORMDEF 'OUTBIN' specification
- Support for extended color functions, including:
 - RGB color space
 - CMYK color space
 - Highlight color space
 - CIELAB color space
 - Logical page and object area color and shading
 - PTOCA 'Set Extended Text Color' order
 - GOCA 'Set Process Color' order
- Support for mapping AFP outline fonts to AFP raster fonts and to PCL printer resident fonts

Features added to **VPS/IPDS**:

- Support for FORMDEF finishing options such as stapling
- Support for FORMDEF 'CUTSHEET' option to allow specifying the orientation of the medium presentation space on the physical medium.
- Support for FORMDEF 'OUTBIN' specification
- Full support for AFP outline fonts

Broadlawns Medical Center Reduces Swollen Printing Costs with LAN-based LRS Software

After installing AnyQueue™, AnyQueue/PageSorter™, and PageCenter Plus®, Broadlawns Medical Center (BMC) was able to move printing away from the IS department's line printers to laser printers in various departments and reduce overall printing costs by implementing PC-based online viewing of large reports.

Organization

Located in Des Moines, Iowa, BMC is a 200-bed publicly supported hospital with more than 1,000 employees and 360 attending physicians on staff.

BMC is a Remote Computing Option (RCO) customer of Siemens Medical Solutions Health Services Corporation. Siemens RCO customers outsource the day-to-day task of managing their computer systems to the Siemens Information Services Center, which offers clinical, financial, and administrative applications.

Need

For BMC's IS department, the RCO relationship meant receiving mainframe reports from Siemens during third shift each day, printing them on line printers, breaking the reports down manually and delivering them to various departments. In addition to transmitting daily reports, Siemens printed large reports, such as a weekly 3,000-page report, at its data center and shipped them to BMC.

After examining its printing environment, BMC determined that it could reduce costs by achieving two goals: Eliminating the need to have Siemens print and ship large reports and eliminating the centralized printing of Siemens-transmitted reports.

Solution

AnyQueue, AnyQueue/PageSorter, and PageCenter Plus work together seamlessly to provide an integrated software solution for BMC. AnyQueue routes host-generated data from Siemens to multiple LAN destinations, including the input directory for PageCenter Plus. PageCenter Plus provides PC users with access to a LAN-based archive of reports along with the tools to mine specific data from those reports. AnyQueue/PageSorter makes

multiple copies of a report for broadcasting to multiple locations, decollates reports into sections, and determines routing based on the content of the output.

BMC uses AnyQueue and AnyQueue/PageSorter to automatically break down reports and distribute them to approximately 25 laser printers in departments throughout the hospital. Large reports go directly into the PageCenter Plus archive for online viewing.

Result

BMC saw an immediate savings of \$5,000 to \$6,000 a month once Siemens stopped printing and shipping the hospital's large reports. By distributing daily reports to laser printers in various departments, the hospital was able to reduce the number of full-time shift operators in the IS department and the amount of green-bar paper it uses—green-bar paper costs twice as much as the paper BMC buys for its laser printers.

PageCenter Plus has positioned BMC to begin the work necessary to discontinue microfiche production. BMC expects to save an additional \$5,000 to \$6,000 per month once it stops microfiche production.

The hospital quickly saw soft-dollar savings in the form of greater productivity with Siemens reports imported into PageCenter Plus. Within a report, PageCenter Plus users can simply search for matches to a specific value or browse through matches to a value.

Instead of thumbing through a 3,000-page report, BMC users can browse through a subset of that information. They can easily export the subset to a file formatted for use in spreadsheets, databases, or other Windows-based applications. There's no longer a need to rekey data for additional analysis.

BMC implemented LAN products from LRS in an effort to reduce cost. The hospital achieved that goal and more—users get the reports they need, IS staff no longer needs to separate reports and distribute them, and users are more productive.

For a copy of our Case In Print describing BMC, contact your marketing representative.



First User Conference Successful; More Planned For Spring 2002

In November 2001 LRS hosted our first Public Sector Users Conference. The event was held in Washington, DC, and was very successful. Thirty VPS® users from all levels of government attended the free two-day training seminar. We provided technical training, product updates, and demonstrations for the entire VPS product line. Attendees took advantage of the opportunity to network with other VPS users and to meet and talk to senior members of our marketing and development groups.

We are excited to be hosting User Conferences in April and May 2002 in New York, Las Vegas, and Chicago.

At each conference, VPS experts from LRS will detail everything that's new in our Enterprise Output Management product suite, including:

- VPS V1 R8.0
- VPS/Email
- VPS/LCDS
- BIP support in VPS/TCPIP
- AnyQueue/WebTRAC™

We will present overviews on configuring and operating VPS products, demonstrate PageCenter® and VMCF Client for Windows, and take a special look at Xerox printing with VPS/XES and VPS/LCDS. We will also offer an overview of the entire DRS suite of products, including DRS/TCPIP and DRS/Natural.

Special breakout discussion groups during lunch both days will give everyone a chance to discuss questions and concerns with other users along with experts from LRS.

A reception after the conference's first day will provide attendees with another chance to talk in depth with other VPS users as well as LRS experts.

For more information about the free conferences, or to register for a conference, go to <http://www.LRS.com/eom/UserMain.htm>



Levi, Ray & Shoup, Inc.

ENTERPRISE OUTPUT MANAGEMENT

2401 W. Monroe Street ■ Springfield IL 62704
217.793.3800 ■ Fax 217.787.0979

The Print Line



Winter 2002

LRS Offices

Levi, Ray & Shoup, Inc.
2401 West Monroe Street
Springfield IL 62704 USA
217-793-3800

Fax: U.S. Marketing: 217-787-0979
Int'l Marketing: 217-787-0979
Support: 217-787-4014

Levi, Ray & Shoup
Level 6, Suite 12
100 Walker Street
North Sydney NSW AUSTRALIA 2060
612-9922-3800

Levi, Ray & Shoup, Inc.
(Deutschland)
Laplacestraße 5
D-81679 Munich GERMANY
+49 (0)89/28 66 95-0

Levi, Ray & Shoup, Inc.
(Deutschland)
Beethovenstraße 18
63263 Neu-Isenburg GERMANY
+49 (0)6102-79 58-0

Levi, Ray & Shoup, Inc.
(Sucursal en España)
C/Princesa, 24, 1º Izda
28008 Madrid SPAIN
34-91-567-8467

Levi, Ray & Shoup, Inc.
(United Kingdom)
Regent House
Rodney Road
Cheltenham, Gloucestershire GL50 1HX
UNITED KINGDOM
44 01242 537500

LRS Distributors

Softron SA
Maipu 836 Piso 4
C1006ACJ Buenos Aires ARGENTINA
5411-4314-7771

CSC BRASIL Sistemas Ltda
Rua São José, 90 Grs. 1904/05
Centro
Rio De Janeiro RJ 20013-900 BRAZIL
55-21-2-544-4252

Softron Chile
San Antonio 385 Esc. 501
Santiago CHILE
562-633-1774

PartnerSoft
36, rue du Chemin Vert
75011 Paris FRANCE
33 14-314-8686

Ness A.T. Ltd
Atidim, Neve Saret
Devora Havia 2
P.O. Box 58180
Tel Aviv 61581 ISRAEL
972-3-548-3524

D.P.C.S. srl
Via Ceppo 2A
23807 Merate (Lecco) ITALY
39-039-9992101

Memorex Telex Japan Ltd.
Shiba Park A Building
2-4-1, Shiba-koen
Minato-Ku
Tokyo 105-8569 JAPAN
81-3-5472-2918

SoftPlex
1-7-6 Iidabashi New Towa Bldg. 4F
Fujimi Chiyoda Tokyo
JAPAN 102-0071
81-3-3511-7941

Productividad Funcional S.A. de C.V.
229 Col Hippodromo
Condesa C.P. MEXICO D.F.
5273-3818

Systems and Communications House Ltd/
Soft Net
Prince MUSAED bin Abdul Aziz Street
P.O. Box 63438, Riyadh 11516
SAUDI ARABIA
966-1476-4606

Computer Printing Specialists PTE LTD
16 Raffles Quay
Level 136
Hong Leong Building
SINGAPORE, 179098
65-336-3615

AST Group
47 Landmark Avenue
Kosmosdal
Halfway House
Samrand 1685
SOUTH AFRICA
27-12-675-5000

Grupo Quanam
Canelones 1370, Piso 5
Montevideo URUGUAY 11200
598-2-92-2118

Open Systems Solutions S.A.
Av. Francisco de Miranda
Torre Polar "B", Piso 11. Chacao
Caracas VENEZUELA
58 (212) 264-4086