

Get clear vision and an improved outlook.

Monitor your entire mainframe network through a browser-based GUI.



Vital Signs VisionNet's intuitive GUI empowers IT staff; Lets them easily diagnose complex TCP/IP issues on z/OS (or OS/390) systems.

Most mainframe system managers agree that a reliable network performance monitor is a business tool of critical importance. The question is, which one provides the performance and the features that you want, at an affordable price?

Now, more than ever, the answer is clear. Vital Signs VisionNet™ is the single application that brings your entire enterprise into focus — quickly, easily, affordably.

VSV is the best solution to merge information from multiple stacks and different vendors into a unified picture of SNA and TCP/IP. And now, with an intuitive graphical user interface, Vital Signs VisionNet can help you manage a network — even one with thousands of users — with more ease and accuracy

Vital Signs VisionNet lets you see what's on the horizon.

Vital Signs VisionNet expands your capabilities by providing critical data — quickly, easily, and accurately. It provides real-time displays and historical data from a single central data repository.

Vital Signs VisionNet automatically archives its historical data, and it is the only browser-based performance monitor that lets you integrate data from other sources into a historical database.

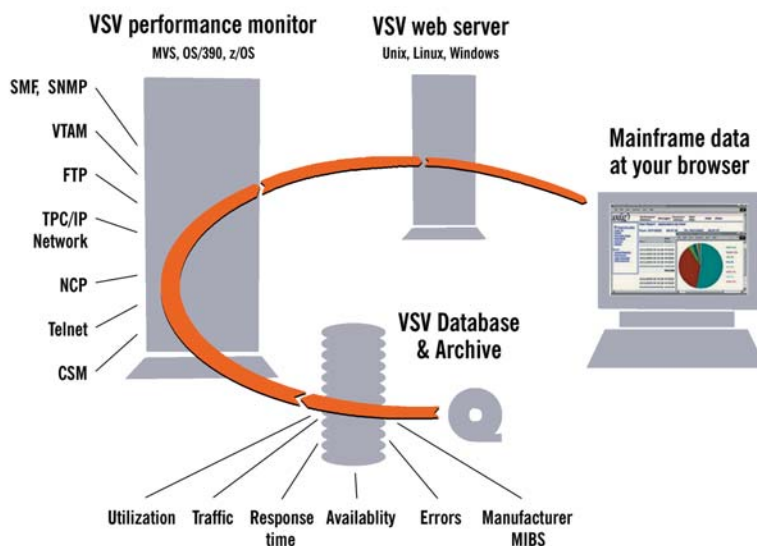
In addition to getting performance data, you can interact in real time with the SNMP daemon running in every TCP/IP host. This way you can see non-performance-related MIB elements such as routing and settings. And access is secure.

You can put your information right to work. User-friendly reports are provided in just the format you want, whenever you want them. You can drill down for specifics, generate reports in just about every imaginable format, and forward them to other users or a laser printer.

More powerful features give you the foresight to manage more effectively.

Monitor FTP status and session activity, right down to byte counts. You get a complete synopsis, by z/OS host name. Point and click to drill down for more information. Planning reports show FTP sizes, most-commonly-used datasets, and where the traffic is coming from.

VSV shows you the full picture



1 CPU Utilization

- PRECISELY TRACK CPU DEMANDS FROM YOUR TCP/IP STACKS AND VTAM. RECEIVE CUSTOM ALERTS WHEN UTILIZATION EXCEEDS THE LEVELS YOU SPECIFY.

2 CSM BUFFERS

- GET THE ABSOLUTE MOST FROM LIMITED RESOURCES. BALANCE THE SIZE DISTRIBUTION OF YOUR COMMUNICATIONS BUFFERS TO MATCH YOUR NEEDS.
- CSM REPORTS WILL SHOW YOU THE PATTERNS AS DEMAND CHANGES FROM HOUR TO HOUR, DAY TO NIGHT, WEEKDAY TO WEEKEND.

4 PERFORMANCE ALERTS

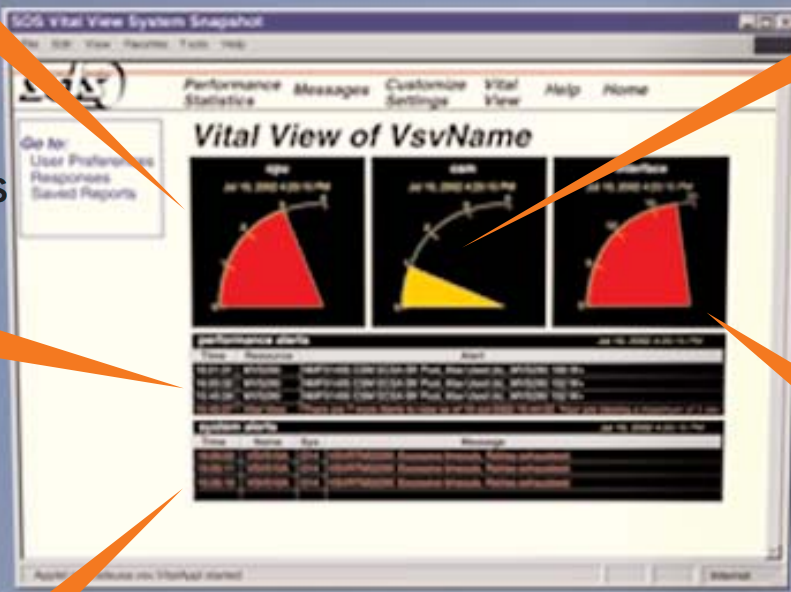
- YOUR IMMEDIATE WARNING WHEN A NODE GOES DOWN. FOR EXAMPLE, IF VSV CAN'T REACH A GIVEN ROUTER, YOU HEAR IT HERE FIRST.
- SPOT PROBLEMS AND TAKE ACTION BEFORE USERS EVEN NOTICE A GLITCH.

3 INTERFACES

- FOR EVERY INTERFACE ON YOUR NETWORK, YOU CAN MEASURE INPUT, OUTPUT, AND ERROR RATES. FIND OUT WHICH OF YOUR ROUTERS WORKS HARDEST AND NEEDS BACKUP.

5 SYSTEM ALERTS

- YOU SET THE THRESHOLD VALUES FOR ALMOST ANY DATA FIELD IN THE EXTENSIVE VSV PERFORMANCE DATABASE. VSV WATCHES NETWORK ACTIVITY AND LETS YOU KNOW WHEN A THRESHOLD IS VIOLATED.



Vital View

- *Real-time graphic displays of TCP/IP, CSM, and CPU utilization show you the strengths and weaknesses of your network before trouble arrives.*
- *VSV alerts you to overloads, outages, and trouble spots, so you can run your network at peak efficiency.*

- ☞ Telnet Application Summary lets you analyze Telnet and TN3270 activity. It breaks out Telnet statistics by host, by application, or by logical unit. You choose the applications and define the collection schedule.
- ☞ Sample response times between the z/OS host and any other connected TCP/IP host. By sampling over the course of the day, Vital Signs VisionNet will profile response time.
- ☞ Capture statistics showing the number and status of the active sockets for each of the TCP/IP hosts on your system, according to the schedule that you define.
- ☞ Get summaries of network activity between applications and terminals, along with information on network services activity — work performed by the host in service to the TCP/IP network itself, rather than host-based operations.

- Customize inquiries and produce reports based on your applications and resources. Get reports specifically for a new installation, for example. Or track down the history of a long-term problem.
- Take advantage of Enterprise MIBs. Access manufacturer-specific data such as traffic, hardware/software status, and diagnostics.
- Use customizable Recall displays to view historical data, or batch-analyze information with historical reporting. Data collections are completely under your control. You can customize data collection schedules to fit your own activity levels, DASD availability, and performance needs.
- Implement workload analysis and capacity planning. Simple point-and-shoot viewing gives you all the detail you want for both VTAM and TCP/IP. Statistics are retained in the central performance repository, where you can combine them with other information for a comprehensive network overview.
- Collect NCP performance data for individual NCP cluster controllers and terminals. And Vital Signs VisionNet adapts automatically whenever your NCP system generates changes.

No other performance monitor provides this kind of value.

Compare Vital Signs VisionNet to any other performance monitor. Feature-for-feature, dollar-for-dollar, there's no better value on the market. And Vital Signs VisionNet is a comprehensive performance monitor, so there's no need for any other software. With Vital Signs VisionNet, you'll see the difference right away, in efficiency, cost-effective data management, and lasting value.

Get up and running now.

No other network performance monitor is simpler to use than Vital Signs VisionNet. It gives you easy access to network performance information with a point-and-click menu system, graphic displays, and online help.

The intuitive, browser-based interface gives novice TCP/IP managers the power to immediately pinpoint problems within your network and contact the appropriate personnel before users inundate your voice mail. Exception and threshold alerts are sent to your desktop and assist in preventing potentially devastating network outages.

The menu system helps your people get up to speed quicker, with less need for training and reference manuals. Even a beginner can use it.

Get clear vision. Now.

It's quick and easy to install Vital Signs VisionNet. You'll see the difference in efficiency and effectiveness right away. And SDS provides all the technical support you could ask for. It's as near as your phone or email.

See for yourself:

Join a free, live webcast and see how our customers are using VSV now.

Or ask for a free 30-day trial of Vital Signs VisionNet for TCP/IP.

Or download a free demo from our website.

For clear vision, network wide, visit us at www.sdsusa.com

Or call 1-877-SDS-TCP/IP (1-877-737-8274)

Or write sales@sdsusa.com



A single application provides a global view of your entire mainframe network.

Vital Signs VisionNet monitors, collects, analyzes and reports network performance statistics for your mainframe TCP/IP network (IBM z/OS or OS/390). The browser-based graphical user interface provides point-and-click simplicity, turning TCP/IP novices into TCP/IP experts. Users report that versatile desktop access and customizable reporting tools allow first-level technicians to pinpoint a problem long before it becomes catastrophic.

Vital Signs VisionNet gives you eyes all over your network with instant access to data that helps you manage network traffic, solve problems before they move downstream, and plan for the future.

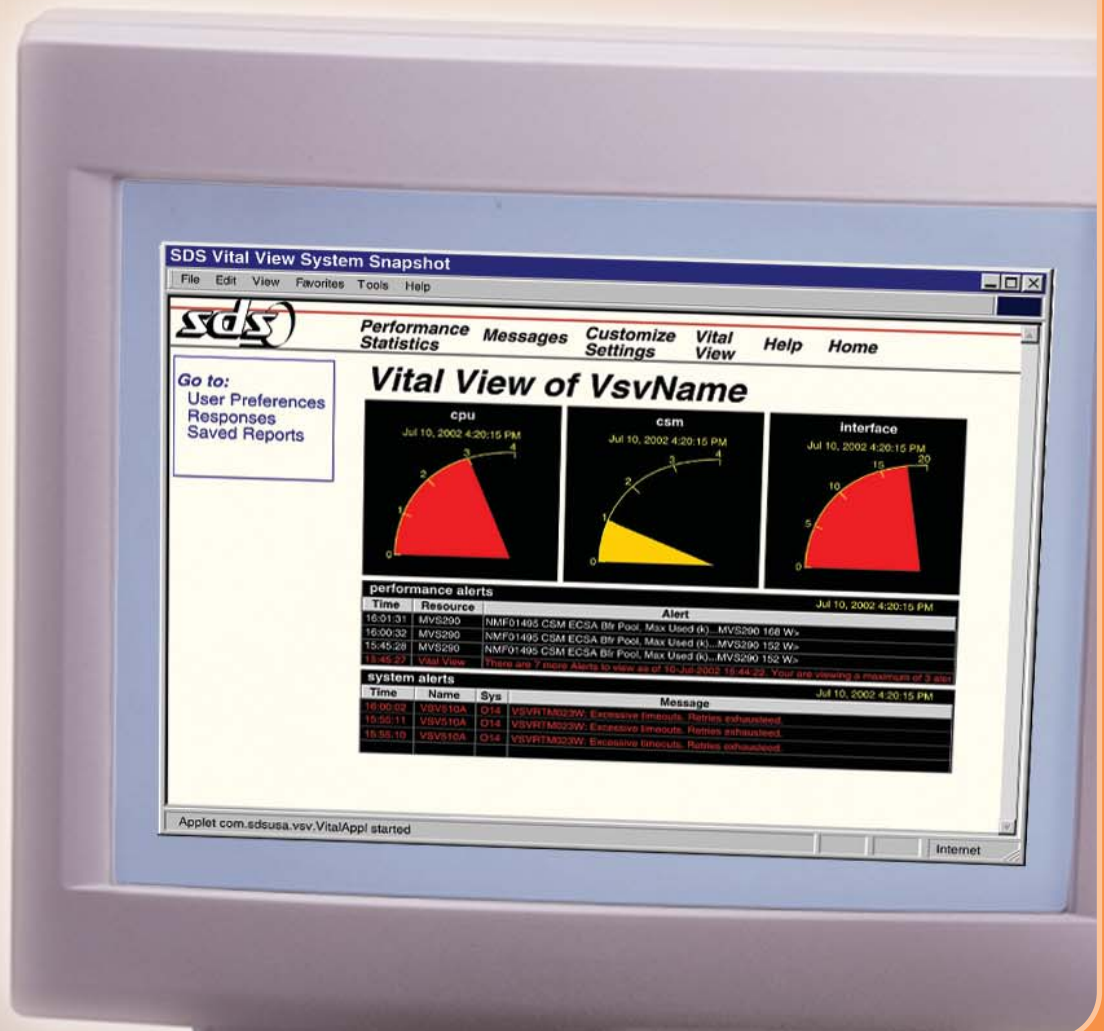
The Vital View browser window continuously takes the pulse of your network. When CPU, CSM, or TCP/IP traffic loads get too high, the meter needles swing into the red zone. You can easily see performance threats, and quickly respond.

Point and click to see Vital View details. Graphs will show you exactly which resources have been working hardest during the past few hours.

For detailed analysis and problem solving, VSV Network Central is your window into the network. A single screen displays a summary of network activity across all the TCP/IP interfaces in your network: operational and administrative status, traffic and error counts, and utilization.

Vital Signs VisionNet: The features you need to analyze network performance:

- ↪ FTP monitoring
- ↪ Telnet monitoring
- ↪ Response time monitoring
- ↪ Socket status
- ↪ TCP and IP monitoring
- ↪ CSM buffer monitoring
- ↪ Real-time load meters and alerts
- ↪ Custom reports for specific resources
- ↪ Online monitoring
- ↪ Interactive MIB inquiry
- ↪ Historical database
- ↪ Alert function
- ↪ Customizable batch reporting
- ↪ VTAM monitoring
- ↪ NCP statistics collection





5155 East River Road
Minneapolis, MN 55421
Phone: 763-571-9000
Fax: 763-572-1721
www.sdsusa.com

BULK RATE
U.S. POSTAGE
PAID
MPLS., MN
PERMIT #2767



The view from Vital Signs VisionNet just got better. Details inside.