

You
Can't Manage

What You
Can't
See



There is a better
way to monitor
response time.

NEW TN3270
Response Time Monitor



Mainframe Network Management
Software Diversified Services



In today's fast-paced world you need **proactive** tools such as VIP's user dashboards for Networks, Applications, Alerts, OSA, Enterprise Extender, FTP, and Telnet. VIP At-a-Glance dashboards offer print capability, logical linkages to associated panels, access to seventeen 2-D and 3-D chart formats, and user controllable options.

Proactive or Reactive? Why not have both?

You also need **reactive** tools and a real-time packet trace that's the best in the business. VIP offers 7 distinct diagnostics tools including Real-Time Packet Trace that serves multiple users running concurrent traces, SNMP MIB Inquiry, Traceroute and Ping utilities that support both UDP and ICMP, MVS Operator Command Console, DNS Look Up, and Connection Explorer.

Effective tracking of FTP and Telnet activity requires visibility of current activity and that from the past weeks or months. Customer configurable "linger" parameters enable you to control how long current FTP sessions (both successful and failed) remain available for viewing.

Quickly identify your heavy traffic loads by system, system and stack, or system and application. With VIP's Activity at a Glance utility, you can launch the Heavy Hitters view to rank traffic by interface or connection, or use the "double sort" to list heaviest users by percentage, system by system. A simple double click enables you to access additional details or drop unauthorized connections.

Remote Host Monitor provides automatic tracking of any IP-enabled device that can be reached by the z/OS stack. You control how often remote hosts are monitored as well as the ability to monitor paths and path lengths. Automatically receive alerts when the path or path lengths change or when a primary path has failed and the secondary has kicked in. VIP's Remote Host Monitor even allows you to bump the probe's packet size and issue thousands of pings for stress testing.

**Don't wait for surprises
or for users to report the failure!**

| Enterprise Extender Connections Summary | | | | | | | | | | | |
|---|------|----------|-----|------|-----|------|-----|------|-----|------|-----|
| System | Port | Protocol | IP | Port | IP | Port | IP | Port | IP | Port | IP |
| ... | ... | ... | ... | ... | ... | ... | ... | ... | ... | ... | ... |

| Enterprise Extender Ports Summary | | | | | | | | | | | |
|-----------------------------------|------|----------|-----|------|-----|------|-----|------|-----|------|-----|
| System | Port | Protocol | IP | Port | IP | Port | IP | Port | IP | Port | IP |
| ... | ... | ... | ... | ... | ... | ... | ... | ... | ... | ... | ... |

Enterprise Extender

VIP's Enterprise Extender at a Glance provides a real-time monitor for all Enterprise Extender connections and ports. Connection and port summaries report status, availability, network response times, and bytes and datagrams transferred — inbound and out.

| Time | Source | Destination | Protocol | Length | Flags | Window | Checksum | Options | Raw |
|------|--------|-------------|----------|--------|-------|--------|----------|---------|-----|
| ... | ... | ... | ... | ... | ... | ... | ... | ... | ... |

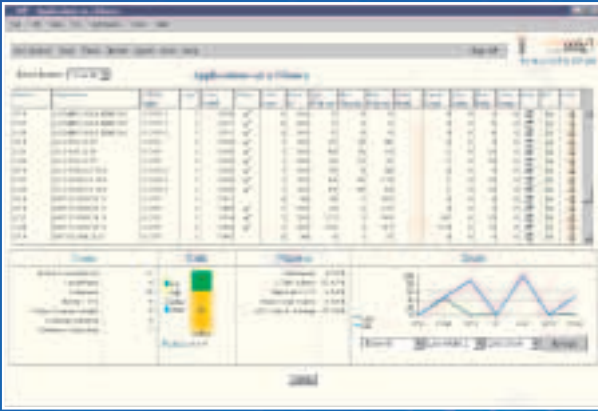
Real-time Packet Trace

VIP's Real Time IP packet trace is simple to use, extremely powerful, and you can see the results in real time! Start a packet trace in just a few easy steps. VIP trace archives are in standard IBM Component Trace format, so they can be viewed with IPCS. VIP's packet trace can be easily converted to a format (.enc) for viewing with sniffers or shareware products such as Ethereal.

| Time | User | IP | Port | Bytes | Return Code | Dataset Name |
|------|------|-----|------|-------|-------------|--------------|
| ... | ... | ... | ... | ... | ... | ... |

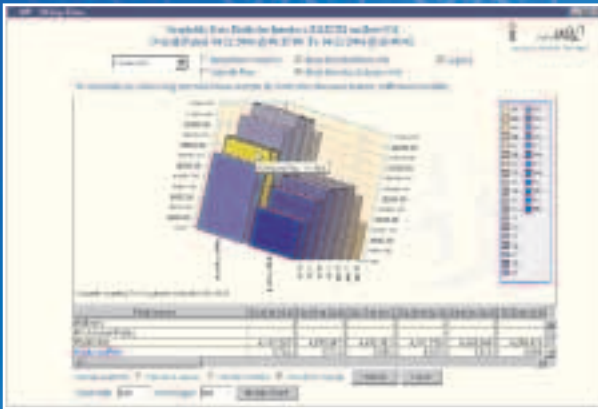
FTP History

VIP's FTP History dashboard enables comprehensive tracking of past FTP activity, including details such as user IDs, IP addresses, bytes transferred, FTP return codes, and dataset names. When used in conjunction with FTP at a Glance, network managers have detailed information for current, recent, and long-term FTP activity. Drill down on specific session details and navigate from session to session from this intuitive interface.



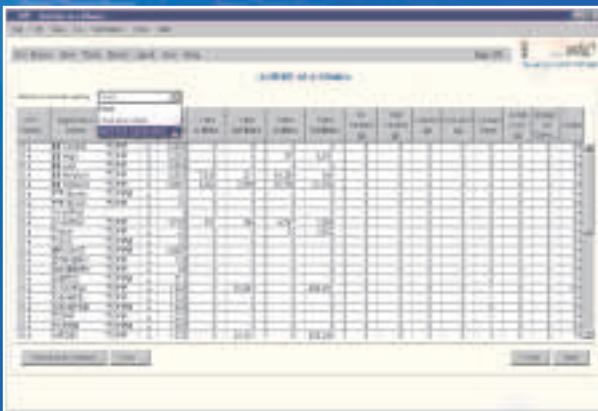
Applications at a Glance

In a single screen, VIP's Applications at a Glance presents a central access point for monitoring the health of every monitored application on your network. You can track application availability and status in addition to important metrics such as backlog counts and dropped connections to identify problem areas before they become critical.



Graphing/Charting

With VIP's powerful and dynamic charting tool and history reporting, you can display your critical data in 17 different views, even in 3-D! Select fields, time spans. Compare values or deltas. Rotate your 3-D charts to see different angles. Zoom in and out to suit your needs.



Activity at a Glance

Identify where your heaviest traffic loads are and sort by Host, Host and Stack, or Host and Application. The built-in sorting lets you pinpoint application traffic loads by bytes transferred, current, accepted, dropped connections, and retransmissions. You can also drill down on each application for more detailed information and print the results.



VIP's reactive diagnostic tools are accessible from context-sensitive menus and dashboards whenever troubleshooting is warranted. Avoid launching DOS windows or other utilities to run basic diagnostics.

Logical linkages between the primary dashboards and user panels ensure troubleshooting tools are accessible when you need them.

Real-Time IP Packet Trace – Serve multiple users running concurrent traces. Output IPCS format compatible with IBM's Packet Trace Utility or convert traces for viewing with sniffer or shareware products like Ethereal.

Traceroute – A convenient way to estimate a path's MTU size. Using either UDP or ICMP pings, set do-not-fragment, and bump the packet size to pinpoint which node requires fragmentation.

MVS System Operator Command Console – Issue system operator commands from your browser!

Ping – The UDP Ping, unique to VIP, provides a "hop count" of each forwarding interface, providing a more accurate measure of network transit times than ICMP pings. With do-not-fragment support.

SNMP MIB Inquiry – Support for mandatory, IBM Enterprise, and OSA MIBs.

DNS Look Up – Resolve host name to IP address or IP address to host name with ease.

Connections Explorer – Use filters to identify and list connections by application, current state, VTAM Application ID or LU Names.

* VIP's monitoring approach prevents blind spots so you can see connection backlogs, hung connections and packet discards due to bad checksums.

* VIP automatically discovers local (z/OS) stacks, interfaces, connections, Enterprise Extender connections, and TCP or UDP applications, including all stacks on an LPAR.

* VIP enables you to monitor enterprise-wide with a single browser instance.

For more information:

1-877-737-8274 , www.sdsusa.com





VIP's efficient **non-SNMP** data collection results in **LOW CPU Consumption & TRUE Real-time** monitoring

Innovative and comprehensive at-a-glance screens,
TN3270 Response Time Analysis, and diagnostics including:

- OSA devices
- TCP/IP Stacks
- Applications
- CSM Buffers
- Telnet
- Enterprise Extender Connections and Ports
- Interfaces
- Connections
- FTP, Current and Historical
- Tier-1 Devices

Manage TCP/IP
network Resources
Efficiently,
Effectively,
Intuitively



Request a FREE Product Trial TODAY!



SDS VIP is the only z/OS-centric TCP/IP monitor built from the ground up using state-of-the-art web technology.

TN3270 Response Time Analysis has never been easier!
Request a free SDS VIP product trial at www.sdsusa.com/vip

In business for over twenty years, supporting over 20 VSE and MVS mainframe systems products for customers and distributors worldwide.

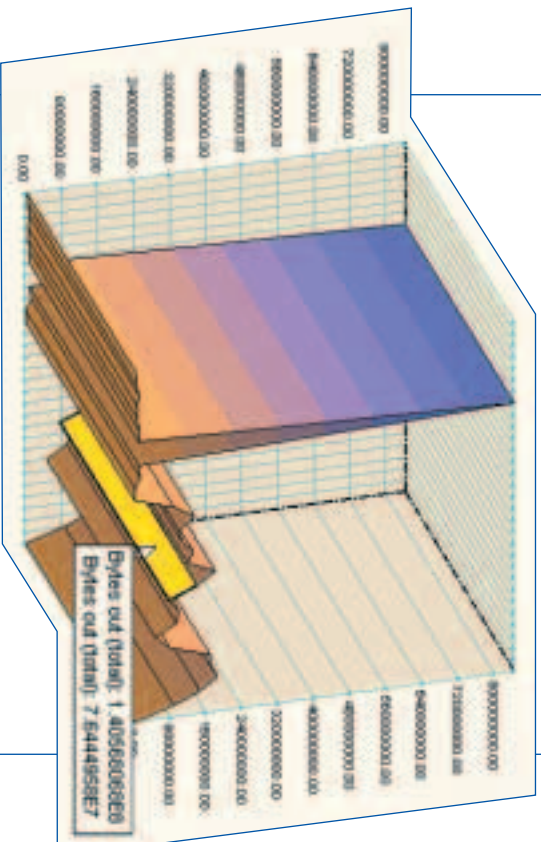


1-877-737-8274 , www.sdsusa.com



6010 Earle Brown Drive
Brooklyn Center, MN 55430
www.sdsusa.com

Proactive monitoring, diagnosis, and performance management of your mainframe network



SDS VIP is the only z/OS-centric TCP/IP monitor built from the ground up using state-of-the-art web technology. Get a free download of SDS VIP at www.sdsusa.com/vip today.

PRSRRT STD
U.S. POSTAGE
PAID
PERMIT NO.
2767
MPLS, MN